

Navigating the Future with High-Speed Maritime Connectivity

Operational
Excellence & Safety



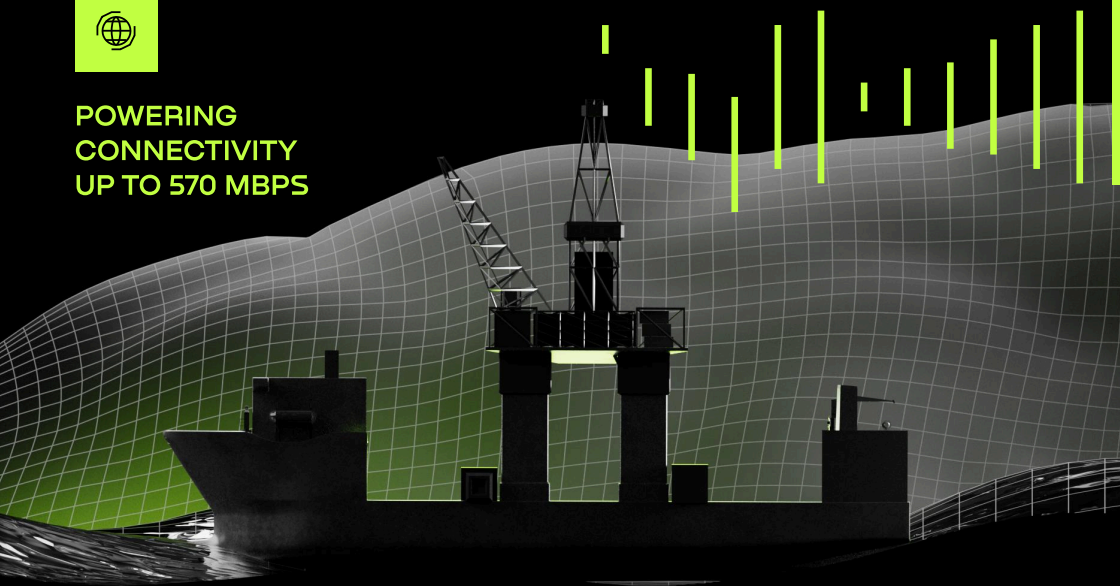
Next Level Crew And
Passengers Experience



Smart Onboard
Services



**POWERING
CONNECTIVITY
UP TO 570 MBPS**



ASTRADRIVE

Cuts Operational Costs While Ensuring Full Coverage

Achieves reliable
connectivity up to 30 km
offshore for vessels in
range

Self-Optimizing, Fail-Safe Network

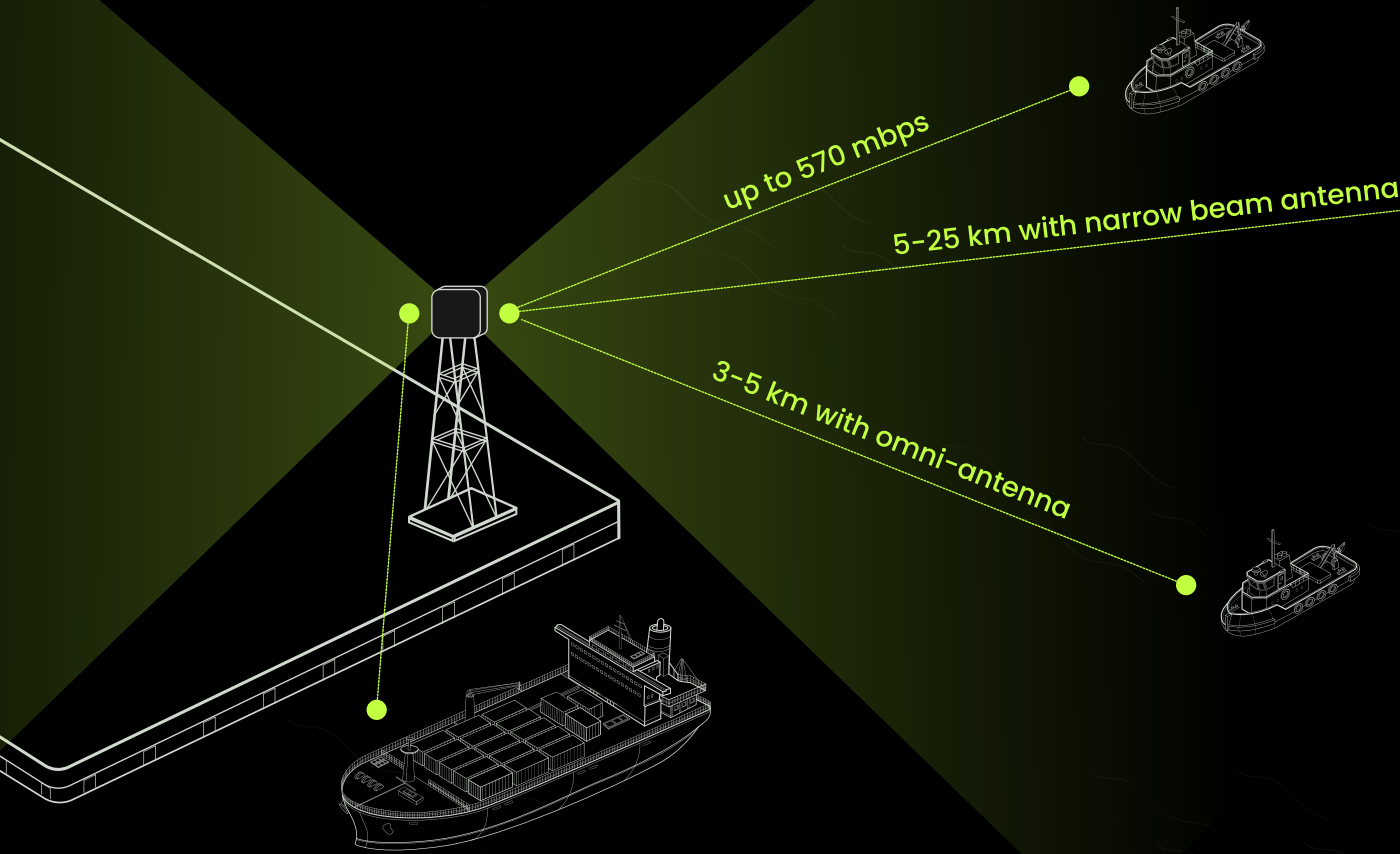
ASTRADRIVE technology
maintains performance
through multiple
subscriber devices
installed on each vessel

End-To-End Integrated Solution

With perfectly
integrated components
designed to work in
harmony

Extended Range & Performance

Specialized high-gain sector antennas (90° directional) and transmitters (up to 27 dB power) enable long-distance coverage up to 30 km, significantly outperforming traditional omnidirectional antennas

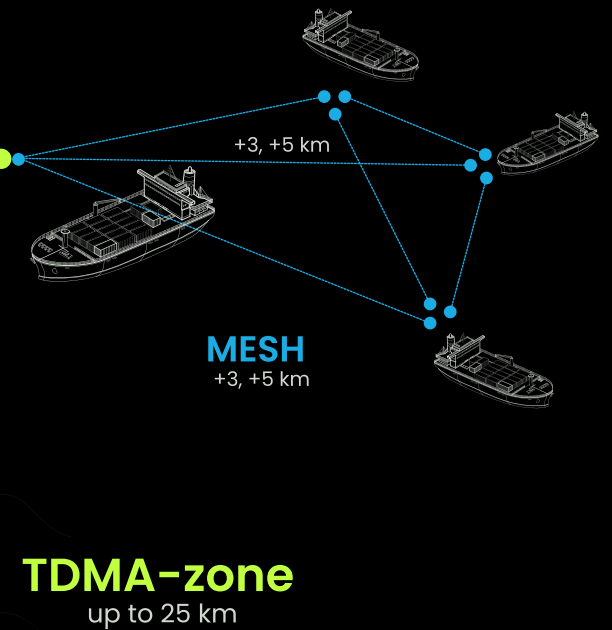


Adaptive Hybrid Connectivity

ASTRADRIVE combines TDMA for low-latency performance and MESH for extended coverage, ensuring stable connectivity in remote maritime zones and challenging NLOS conditions, even with water-reflected signals

End-To-End Vendor Support

Astrawireless provides comprehensive network design and optimization, ensuring seamless integration of components, efficient resource utilization, and cost-effective scalability



Maximizing Speed Through Intelligent Radio Planning

Advanced network design and high-energy devices maximize signal strength for faster data transmission. Redundant links ensure seamless roaming and reliable connectivity across coverage zones

AstraMUX-GE4-S2

Industrial switch optimizing mobile network performance, enabling traffic balancing and seamless switching between moving and fixed infrastructure



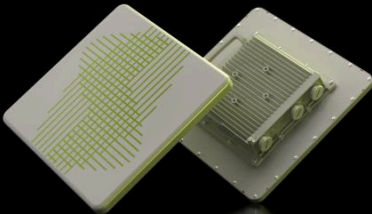
AstraMUX-GE8

High-capacity rack-mount switch for network aggregation and centralized traffic management, supporting multiple switches and base stations to ensure a stable, scalable backhaul infrastructure for rail and mobile networks



DRIVE E5-BSI

Sector base station with an integrated 16 dBi antenna, featuring a wide 90° beamwidth and throughput of up to 800 Mbps for high-performance coverage across its entire sector



DRIVE E5-BSQ

Smart-beam sector base station that amplifies link power up to 4x within its coverage area, significantly extending range compared to typical sector antennas



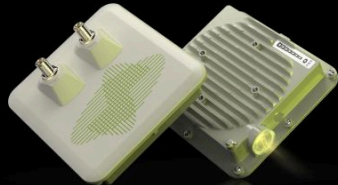
ANT-OMNI-10

Omnidirectional antenna with dual polarization, corrosion-resistant housing, and consistent 10 dBi gain across its 360° beamwidth and all operating frequencies



DRIVE E6-STE

Subscriber terminal with external antenna connectors, delivering up to 570 Mbps of wireless throughput. Special lacquer coating ensures enhanced resistance to salt fog and harsh marine conditions



Develops high-capacity wireless systems for backhubs and access networks, designed for complex, high-performance environments

