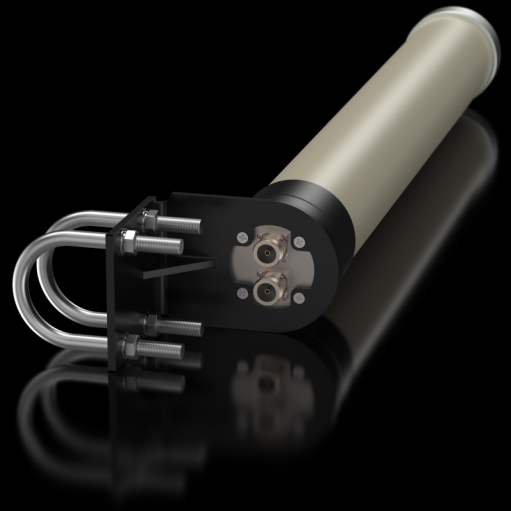


ASTRADRIVE ANT-OMNI-10

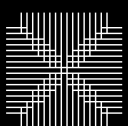
PRODUCT DATASHEET

ANT-OMNI-10 external dual polarization omni directional antenna is intended for connection to outdoor units with N-type ports of all Astra Wireless families.



With its reinforced construction and 10 dBi gain, this antenna delivers reliable 360° coverage while maintaining optimal signal strength. The antenna mounting kit has been specially designed to withstand high levels of vibration, making it ideal for mounting on moving objects.

Antenna gain	10 \pm 1 dBi
Frequency range	4900 - 5900 MHz
Polarization	Dual



Astrawireless

TECHNICAL SPECIFICATION

Polarization	Horizontal (HOR-port) Vertical (VER-port)
Beam width, Azimuth	360°
Beam width, Elevation	11°
VSWR	4.9-5.1 @ 2.5:1 max 5.1-5.9 @ 2: 1 max
Connectors	2 X N-Type, Female
Isolation between ports	-30 dB typ. -20 dB min
Input impedance	50 Ohm
Input power	10 W
Dimensions and weight*	355x66x66 mm, 0.52 kg
Lightning Protection	DC Grounded
Operating temperature	from -55°C to +65°C
Water and dust protection	IP66, IP67
Wind load	120 kmh - operational 200 kmh - survival
Environmental resistance	Flame: UL94 Vibration: IEC 60721-3-5 Class 5M2 Humidity: ETS 300 019-1-4 EN 302 085 (annex A.1.1) Salt Fog: IEC 68-2-11



Astrawireless

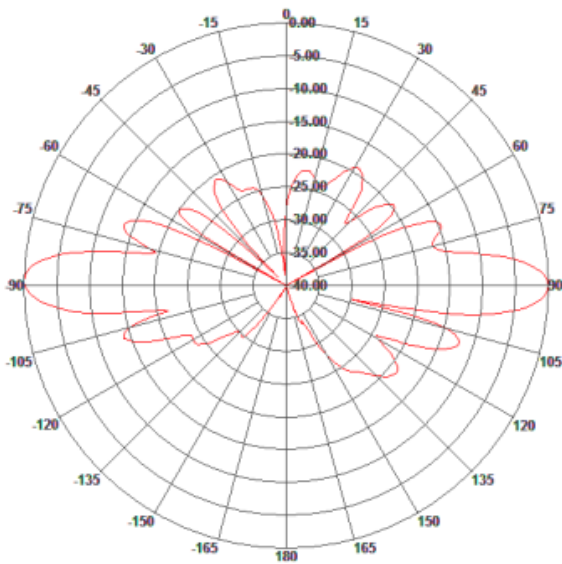
Astra Wireless Technology. All rights reserved.

www.astrawireless.net

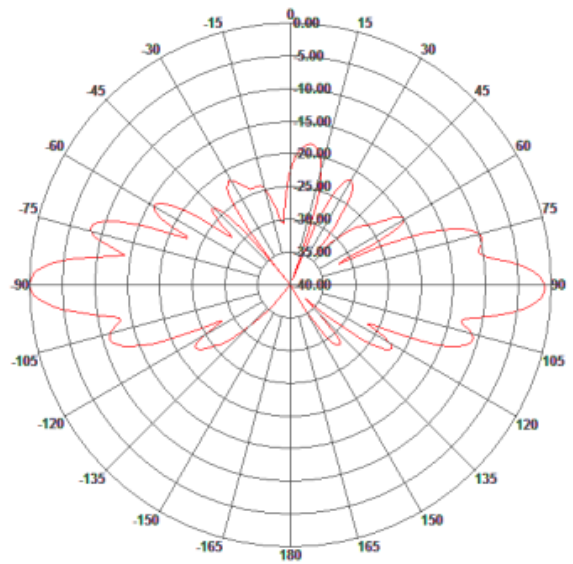
sales@astrawireless.net

RADIATION PATTERN

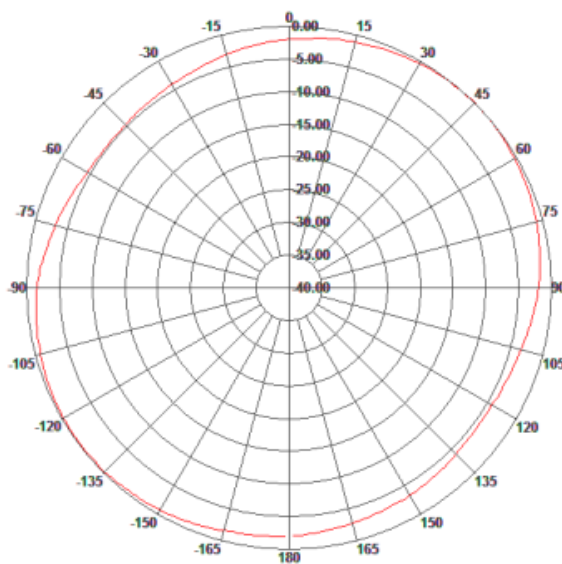
E-plane H-pol



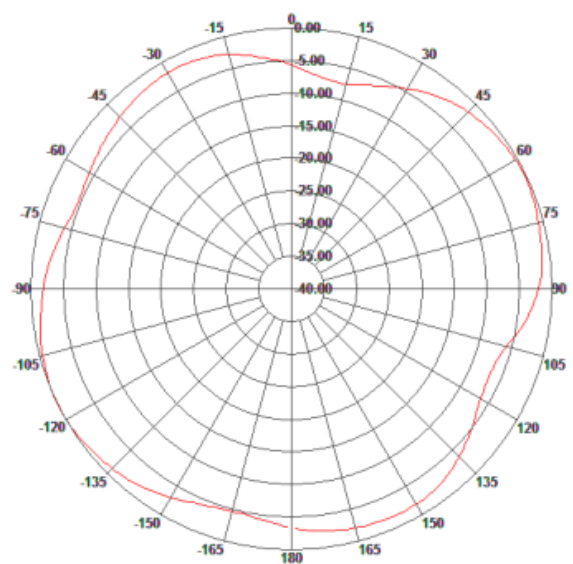
E-plane V-pol



H-plane H-pol



H-plane V-pol



Astrawireless

Astra Wireless Technology. All rights reserved.
www.astrawireless.net
sales@astrawireless.net